

Quarter 3
FY 25

Tuscola Tracker

APRIL

- Autism Awareness
- Child Abuse Prevention
- Sexual Assault Prevention
- Distracted Driving Awareness
- Testicular Cancer Awareness

MAY

- Mental Health Awareness
- Stroke Awareness
- Better Hearing & Speech
- Skin Cancer Awareness
- Better Sleep

JUNE

- Alzheimer's & Brain Awareness
- Cataract Awareness
- National Safety
- Men's Health
- National Safety

Topics

Maternal Infant Health

Home-Visiting Week
Healthy Moms, Healthy Babies
Safe Sleep
Region 6 Perinatal Collaborative
Superhero Run

Medicaid

Hearing & Vision

Children's Special Health Care Services

Communicable Disease

Measles
e. Coli

Environmental Health

Veterans Affairs

Quarter 2 Communicable Disease Report



NEW
car seat laws

Rear-facing seat
until age 2!!



Rear-facing
0-2 years



Forward-facing
2-5 years



Booster seat
5-8 years or until 4' 9"



Seat belt
4' 9" or taller



www.tchd.us

1309 Cleaver Rd. Caro,

989-673-8114

Maternal Infant Health



MIHP BROOKE

RN, BSN

Celebrating and recognizing home visitors, like Brooke, and the positive impact made on maternal and child health outcomes.



National Home Visiting Week

April 21-25, 2025

Maternal Infant Health Program

Healthy Moms Healthy Babies

A Michigan Department of Health and Human Services Pilot Program

This pilot program provides enhanced home visiting services to pregnant mothers and new parents and was created to help improve health outcomes for pregnant parents and their children.

The report revealed: parents were less likely to out meals due to cost, forgo essential utilities or become homeless.



Pilot Program Success

- The goal of the project was to understand whether expanding billable MIHP services could better serve families with high levels of need for basic services.
- During the program, licensed social workers, registered nurses and lactation consultants provided home visiting services to pregnant moms and infants, and developed a plan of care for the family to support health pregnancies and infant development.
- Studies show home-visiting programs improve birth outcomes, child language and cognitive development; prevent child maltreatment; increase the use of preventive health care; and enhance parenting and the home environment.
- This pilot program has been funded to expand these enhanced services to the full network of 75+ MDHHS Maternal and Infant Health Program home visiting agencies statewide.

Enhanced Billing

- In agencies with enhanced billing, 90% of White families and 87% of Black families said the program fully met their needs: a 3% gap.
- In the control group agencies, which did not bill for enhanced services, there was a 12% gap between White and Black families on this measure: 90% vs. 78%.

Results

- A 43% reduction in families reporting they went without essential utilities in the last month.
- A 25% reduction in families meeting the definition of homelessness.
- The likelihood of employed individuals reaching out to someone about a job increased by 62%.

Contact Information:

For additional information on TCHD's Maternal Infant Health Program, call 989-673-1740



Why is Infant Safe Sleep Important?

A Michigan baby dies every 2-3 days due to sleep-related causes and following the ABC's of safe sleep can help prevent a baby's death. Tuscola County babies have died due to unsafe sleeping.



Follow these ABC's of Safe Sleep: **ABC - ALONE, BACK, CRIB**

Baby should always sleep **ALONE** – not with an adult, other children, a twin, or anything else, including blankets, pillows or toys.

Baby should always be put down to sleep on his/her **BACK**.

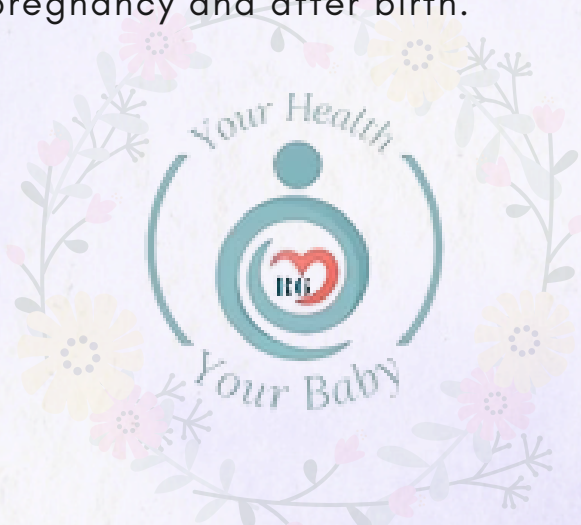
Baby should sleep alone, in a safe **CRIB**, pack & play or bassinet, in the same room as the caregiver.

Tuscola County Health Department provides **FREE** pack & plays, sleep sacks and education to promote and support safe sleep.

Please contact us today to learn more about the Tuscola County Health Department Infant Safe Sleep program.

Region 6 Perinatal Quality Collaborative

Resources to help families during pregnancy and after birth.



Get Connected with Benefits & Local Resources

Have Medicaid questions? We can help! Find out more about Medicaid covered programs and services at the Tuscola County Health Department.

Please contact the Tuscola County Health Department for assistance with creating a **MIBridges account** to apply for health care coverage, food assistance, cash assistance, child care and State Emergency Relief.

Healthcare Coverage
Helps pay for medical costs.



Cash Assistance
Provides cash to help meet your basic needs.

Food Assistance Program (FAP)
Provides benefits to buy or grow food



Women, Infants, & Children (WIC)
Helps moms and kids up to age 5 with food, education, etc.

Child Development & Care (CDC)
Helps pay for childcare costs.



State Emergency Relief (SER)
Provides help or assistance for emergency housing, utility, and burial situations.

THE CHILD ADVOCACY CENTER OF TUSCOLA COUNTY Superhero Run

1 Time, 1 Place, 1 Person:
Superheroes Making a Difference

Friday, May 2nd, 2025
Start Time: 6:30 PM

Location: Tuscola County Fairgrounds,
Corner of State St. and Park Dr., Caro

Course: Accurate & scenic 5K
Walk/Run on road and rail trail

Children 12 and under: No registration fee—
All Children must be accompanied by an adult

Entry Fee ages 13 and up:
Online or Postmarked by 4/21/25: \$30
5/02/25 - Race Day: \$35

Registration: Online at
childadvocacycentersuperherorun.itsyourrace.com/register
or send check payable to CAC of Tuscola and registration to:
Superhero Run, CAC Tuscola 1381 Cleaver Road,
Caro, MI 48723



Scan the QR code
to sign up today!

Hearing & Vision



Do you have a child starting Kindergarten in the fall?
TCHD will be offering FREE hearing and vision screenings this summer for any child that may have missed Kindergarten Round-Up.

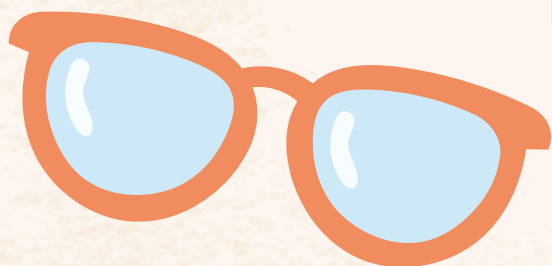
June 11, 8:15 – 3:15

July 23, 8:15 – 3:15

August 5, 10:15 – 5:15

Please call the Health Department to schedule an appoint:

989-673-1717



Children's Special Health Care Services

CSHCS provides services for children and adults up to 26 with chronic medical conditions and special healthcare needs and costs. Some are eligible to remain on as adults with certain diagnoses.

DID YOU KNOW?

The Children's Special Health Care Program is **NOT a Medicaid program.** Eligibility is based off the illness and severity.

Top Diagnoses

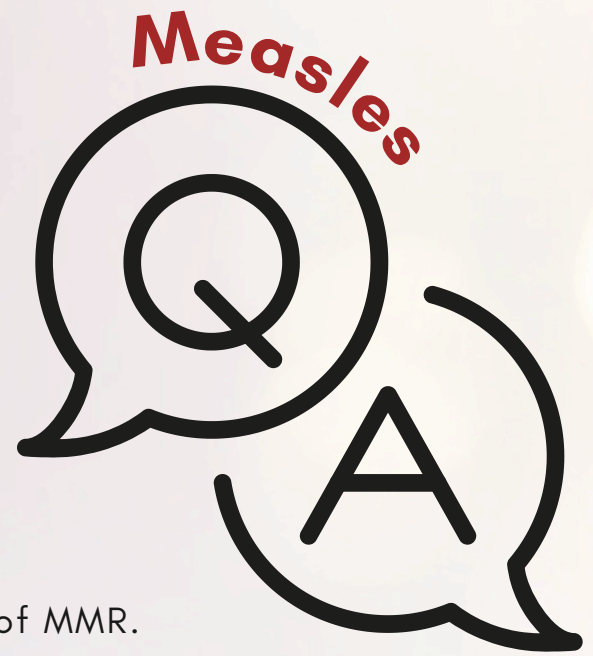
- Prematurity
- Diabetes
- Epilepsy
- Asthma
- Cerebral Palsy
- Hearing Loss



How effective is the vaccine?

The **first dose** of MMR is 97% effective against rubella, 93% against measles, and 78% against mumps.

The **second dose** increases protection to 97% effective against measles and 88% against mumps.



Who should get the MMR vaccine?

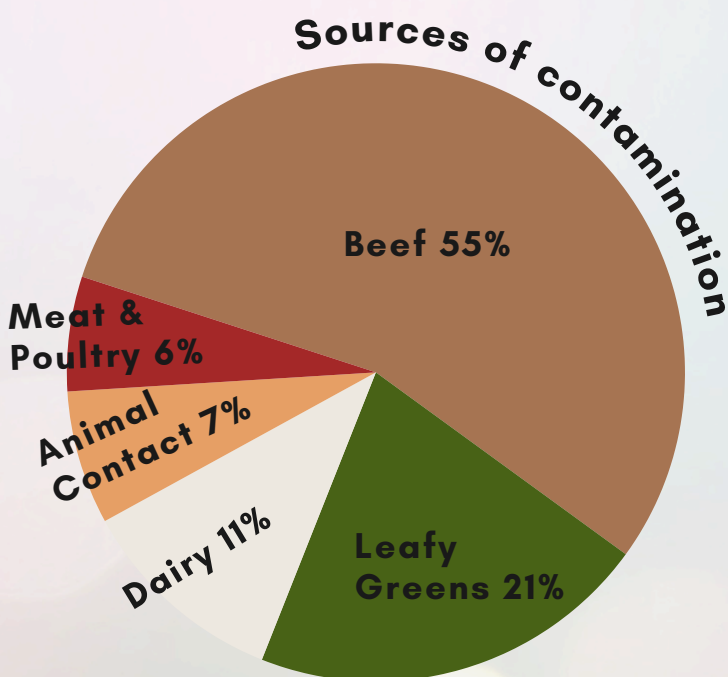
All unvaccinated adolescents should get two doses of MMR.

All adults born after 1957 should have documentation of vaccination or evidence of immunity.

Adults born before 1957 are likely to have had measles and/or mumps and are generally considered immune.

Why do healthcare workers need the vaccine or evidence of immunity?

People who work in medical facilities are at much higher risk for being exposed to disease than the general population.



e. Coli 101

265,000 people are infected annually in the U.S.

Symptoms: Abdominal pain, cramping, diarrhea (sometimes bloody), vomiting & fever.

Prevention: Using proper cooking techniques
Avoid cross-contamination
Wash leafy greens
Choose pasteurized foods

What to do when your water well is flooded

If flooding occurs around your water well, your drinking water may be contaminated. There are things you can do to protect your well and ensure your water is safe.



If your well has been flooded, you should immediately refrain from drinking the water and take the following steps:

1. After flushing the chlorine from the system, collect a water sample and submit it to a certified laboratory for coliform bacteria analysis.
2. Contact your local health department for further assistance if needed.

Inspect the well & pump

- Conditions at the well
- Electrical system
- Pump operation

Clean and flush the well

Flush for at least 2 hours after water clears. Once clear at the storage tank, flush home distributing piping.

Disinfect the well

- Drilled, driven, bored wells
 - Best to have well contractor disinfect.
- Dug wells
 - Do not attempt.

Water testing

After flushing, collect a water sample for coliform bacteria analysis.



Temporary water supply

Water should not be consumed until verified fit to drink.

- Keep supply of bottled water on hand.
- Water can be boiled to kill harmful microorganisms.
- Water can be disinfected with household chlorine bleach.
- A portable filtration unit may be used.

FULL INFORMATION SHEET



Vietnam Moving Wall

Caro, Michigan
June 27, 28 & 29, 2025

Dear Fellow Patriot,

We are proud to announce the Vietnam Moving Wall will be coming to Almer Township's Darbee Farm Park in Caro, Michigan, June 27, 28, and 29, 2025.

The Moving Wall is a scaled down copy of the Vietnam Veterans Memorial Wall in Washington, D.C. The Moving Wall is 252.83 feet long and displays all 58,000 names of soldiers killed in Vietnam, including 21 veterans from Tuscola County.

The Moving Wall was created in 1983 by John Devitt and a group of veterans and their friends in Layton, Utah. Since that time, it has been traveling throughout the United States. It was displayed in Caro in 2004 and will be returning in 2025. It is a very somber and touching display that will touch many people's hearts.

It is a large undertaking to bring the Moving Wall to Caro. It is estimated it will require about 200 volunteers and a cash outlay of between \$40,000.00 and \$45,000.00. This project is being sponsored by Caro American Legion Post #7, with assistance from other veterans' organizations in the county and beyond. It will attract visitors from as far away as Flint, Saginaw, Bay City, Washington State and the complete Thumb Area. We are looking forward to a very large turn-out.

The UH-1H Huey "Greyhound" will be available at the Vietnam Moving Wall display area for viewing and rides.

We have a serious, dedicated group of Veterans spear-heading this great project, but we are in need of additional funds, and here is where you and your organization can help. Please consider making a cash contribution to the Caro American Legion Post #7 Moving Wall, 110 W. Frank Street, Caro, MI 48723. If you have any questions, please see the attached page or give a call to Ron, Hank or Bruce at the respective phone numbers listed.

This will be something our young people, as well as the old, will benefit from spiritually, and hopefully give them a little more sense of patriotism.

Thank you!

January 1, 2025 through March 31, 2025
Tuscola County Communicable Disease Counts

***COVID 19** 133

Foodborne

Campylobacter	0
Norovirus	1
Salmonellosis	2

Influenza

**Flu Like Disease	1645
Influenza	278

Meningitis

Meningitis- Bacterial Other	0
Streptococcus Pneumoniae, Inv.	4

Other

CPO (Formerly CP-CRE);	0
**Gastrointestinal Illness	511
**Head Lice	39
Legionellosis	0
Psittacosis	0
**Strep Throat	75

Rabies

Potential Exposure & PEP Investigations	0
---	---

Tuberculosis

*Latent Tuberculosis Investigations	1
-------------------------------------	---

STI

Chlamydia	12
Gonorrhea	2
HIV	0
Syphilis	0

Vaccine Preventable Disease

Pertussis	0
*Rubella	0
Shingles	0

Vectorborne

Lyme Disease	0
--------------	---

Viral Hepatitis

Hepatitis B, Chronic	0
Hepatitis C, Chronic	4

**Aggregate Reporting

*Includes Probable