

1999-2000 ANNUAL REPORT Tuscola County Health Department

Mission

We are dedicated to promoting and protecting the health of Tuscola County residents by providing a wide range of quality human services.

Vision

We collaborate with the community and each other to provide an innovative approach to health promotion and protection

To Residents and Community Partners in Tuscola County from Gretchen Tenbusch, R.N., M.S.A., Health Officer

On behalf of the Tuscola County Health Department employees and Board of Health, I am pleased to present this Annual Report. This report is intended to highlight accomplishments for fiscal year 1999-2000, including available program services and service delivery outcomes. Fiscal year 1999-2000 was a year of growth. The Community Health Improvement Plan (CHAI) was published in September 1999. A Community Health Assessment and Improvement workgroup was formed to analyze and address the needs of Tuscola County. Three priority areas have been chosen by the work group to be addressed in FY 2000-2001. The Health Department developed new partnerships and strengthened existing partnerships during this fiscal year. In response to the high infant mortality rate in Tuscola County, an agreement was made with Bay Medical Group to bring a Prenatal Care Clinic into the community. The Health Department partnered with area Health Departments and the Tuscola

Intermediate School District (TISD) to develop a regional abstinence education program for area youth. Another partnership was developed with the TISD and the Strong Family Safe Children program to provide secondary prevention to Tuscola County pregnant women and children ages 0-3 years. In June 2001, the Tuscola County Health Department became the fourth Health Department in the State of Michigan to receive Accreditation with Commendation. This status was achieved through the

hard work of dedicated staff and a supportive Board of Health and Board of Commissioners. It is the Health Department's intention to continue to meet the needs of Tuscola County residents through assessment, planning, adaptation, foresight and collaborations. Thank you for your interest in the Tuscola County Health Department. I hope you find this report both interesting and informative. We look forward to serving you and we thank you for your continued support.

Board of Health Members

Betty Colling,
Chairperson

Eileen Hiser,
Vice-Chairperson

Beverly Daily,
Secretary

Norma Bates

Edward Scollon



Seated: Carol Hicks, Administrative Secretary; Gretchen Tenbusch, Health Officer/Nursing Director
Standing: Dennis Smallwood, D.O., Medical Director

Administrative Services

Fiscal Division

Bonnie Sammons, Fiscal Manager

Tuscola County Health Department's Fiscal Division performs all general accounting functions, including accounts receivable, accounts payable, budgeting, purchasing, payroll and financial reporting.

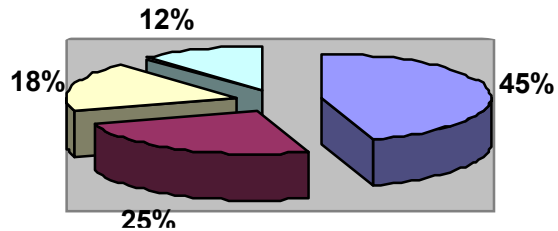
This agency's fiscal operation conforms to generally accepted accounting principles as applicable to government units.



Left to Right: Nancy McCollum, Billing Clerk; Doraine Caverly, Account Clerk; Bonnie Sammons, Fiscal Manager

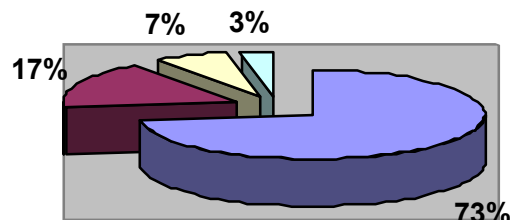
Revenues

State/Federal Grants	45%
Fees	25%
County Appropriations	18%
Other Resources	12%



Expenses

Personal Health	73%
Environmental Health	17%
Administration	7%
Other	3%



1999/2000

BUDGET

\$1,817,907

Management Information Systems Office of Veteran Affairs

Management Information Systems Division

Carol Stephens, MIS Manager

The mission of the MIS Division is to make available comprehensive and high quality services to meet the information technology needs of the health department.

The agency website (www.tuscola.localhealth.net) is continuously maintained and updated, in an attempt to provide Tuscola County citizens the most up-to-date information possible.

The MIS Division has the continuous job of keeping all agency programs up to date with the most current software applications, backing up the system, monitoring for viruses and helping staff to create and run reports as needed.

Currently we maintain 2 file servers, 42 workstations, 8 laptop computers, and 10 shared printer stations. A variety of software programs used within the agency are continuously monitored and upgraded as needed.



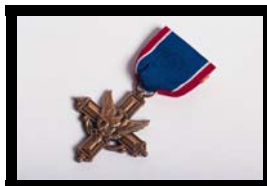
Carol Stephens, MIS Manager; Larry Spiekerman, Veterans' Affairs Director

Office of Veteran Affairs

Lawrence Spiekerman, Director

The County Office of Veteran Affairs is the first point of contact by veterans and their families who seek assistance with Federal, State and County benefits. Monetary benefits payable to veterans and their dependents may be classified into four general categories: Compensation, Dependence and Indemnity Compensation, Pension and Retirement Pay. Other major

benefit programs include: Education Assistance to Children, Wives and Widows, and Veterans, Vocational Rehabilitation, Hospitalization, Home Loans, Insurance Burial Benefits, Tuscola County Soldiers & Sailors Relief Fund, and Michigan Veteran's Trust Fund.



Office Visits	523
Claims Filed	451
House Calls	6
Trust Fund Applications	55
Amount Granted	\$26,683.71
Soldiers/Sailors Relief Applications	83
Amount Granted	\$11,008.00

Health Services Division

Maternal Child Health Services

Kathy Klein, R.N., Assistant Nursing Director of Maternal Child Health



Left to Right: Dianne Milazzo, Program Clerk/Clinic Assistant; Julie Louis, Program Clerk/Clinic Assistant, Sue Johnson, Program Clerk, Mande Franzel, M.S.W., Social Worker; Kathy Klein, R.N., Assistant Nursing Director of Maternal Child Health, Karen Williams, Program Clerk/Clinic Assistant

Children's Special Health Care Services (CHSCS)

Provides financial assistance and case management to children ages birth to 21 years of age who have a chronic health problem or handicapping condition. Children can be sent on a free diagnostic visit to an enrolled specialist.

Caseload	298
-----------------	------------

Child Well Being

To determine, during a series of assessments, the safety status of children in the home. To provide families with information on Medicaid, Food Stamps, WIC, Immunizations, Day Care and other community resources for which families may be eligible.

Individuals Served	14
---------------------------	-----------

Early On

Assists with provision and coordination of services to children and families from birth to 3 years, who have special medical, physical or developmental needs.

Individuals Served	25
---------------------------	-----------

Early Periodic Screening Diagnosis & Treatment

Provides health and development screening and referral for individuals from birth to age 21 who are currently covered by Medicaid. Immunizations, hearing, vision and lead screening, and Denver Developmental testing offered. The Well Child Clinic (WCC) provides health screening for individuals without Medicaid for a small fee.

EPSDT Individuals Screened	567
WCC Individuals Screened	46

Immunizations

Reduces vaccine preventable diseases by providing free or affordable immunizations to all people from birth through adulthood.

Immunizations	9,110
Flu Vaccine	1,840
Pneumococcal Vaccine	122

Outreach (Healthy Kids/ MICHild Applications)

Assists with enrollment in Healthy Kids or MICHild insurance for those under the age of 19 and/or pregnant. Application assistance also provided for the Low Income Families (LIF) Program. Also, assistance to complete health visits for infants and children on Medicaid.

Individuals Served/ Applications	139
Other Assistance	849

Health Services Division

Touching Lives of Children (TLC)

TLC is for pregnant women and families with children from birth through three years of age. It focuses on all areas of life such as: Family, Nutrition, Parenting, Growth and Development, Problem Solving, Personal Time. TLC also offers Center Based Services at Highland Pines School. Fun times and learning activities for both parent and children.

Individuals Served **23**

Maternal/Infant Support Services

Maternal Support Services provides visits throughout the pregnancy and up to two months postpartum to assess and teach about pregnancy, childbirth, child care and parenting. Client must be Medicaid Eligible or enrolled in MOMS (non-Medicaid MICH-Care Program). Infant Support Services include home visits for infants up to one year who are eligible for Medicaid. Includes assessment of child's development, nutrition and social needs.

Individuals Served **206**

Prenatal Clinic Services

Prenatal Clinic services is a combined effort between Bay Health Medical Group/Women's Care and the health department. Patients see midwives for prenatal care and education. Women deliver at Bay Medical Center, Bay City. Program is available to all women in Tuscola County.

Individuals Served **94**

Program Began 1/2/2001

School-Based Programs

Hearing and Vision Screenings are provided by trained technicians in area schools for preschool and school-aged children.

Hearing—Individuals Screened **4,525**

Vision—Individuals Screened **5,743**

MCH/March of Dimes

Visits made to parents of newborns, especially with complications and special problems. Other visits may be made to families of children with health risks and special needs.

Individuals Visited **25**

Phone/Mail Contacts **620**

Women, Infants & Children (WIC)

WIC offers nutrition education and coupons for supplement food for children under the age of five and pregnant or nursing women. Families must meet income guidelines.

Caseload **1,420**



Left to Right: Elaine Tompkins, R.N.; Nancy Jones, R.N.; Kelly Germain, R.N., Immunization Program Coordinator; Lugene Kruse, Program Clerk, Ruth Kile, Program Clerk



Left to Right: Patty Dunham, Clinic Assistant; Beth Anthes, R.N.; Marcy Brinkman, R.N.; Lorraine Harrington, R.D., Dietitian; Kristi Suber, M.S.W.; Janet DeLorenzo, Clinic Assistant; Janelle Dickinson, Program Clerk

Health Services Division

Preventive Health Services

Ann Hepfer, R.N., Assistant Nursing Director of Preventive Health



Front Row, Left to Right—Nancy Jones, R.N., Judy Kapa, R.N., Nurse Practitioner; Chris Shaw; Clinic Assistant
 Second Row, Left to Right—Elva Gutierrez, Program Clerk/Clinic Assistant, Ann Hepfer, R.N., Assistant Nursing Director of Preventive Health; Kristi Villalobos, R.N., Family Planning Program Coordinator

Abstinence Program

Through a grant from MDCH, we promote abstinence among young people across the county. The goal of the Abstinence Program is to positively impact the lives of youth ages 9-17 and their families through health promotion. These activities promote abstinence from sexual activity and discourage any illegal use or misuse of alcohol, tobacco, and other drugs in the community. This is accomplished through After School Programs and Day Camps.

Reproductive Health Family Planning

Provides counseling, birth control supplies, pregnancy testing, and sexually transmitted disease information to men and women of child bearing age.

Individuals Served	1678
---------------------------	-------------

Fire Prevention

Provides smoke alarms and fire safety education in three target communities with high incidences of fire related mortality.

Households Receiving Alarms	81
Alarms Distributed	197

Geriatric Services

Provides a community based program focusing on maintaining independence, preventing risks to health and well being and developing strategies to meet the health and medical needs of the mature adult.

Services Provided	30
Educational Encounters	14



Abstinence Program Day Camp held at Indianfields Park July 9th—July 13th.

Day Camp was a great success and enjoyed by all participants.

Environmental Health Division

Environmental Health Services

Edward L. Kimbrue, R.S., Director of Environmental Health



Left to Right: Jerry White, R.S., Sanitarian; Marsha Clark, Program Clerk, Tip MacGuire, R.S., Sanitarian; Kent Singer, R.S., Sanitarian; Ed Kimbrue, R.S., Director of Environmental Health

Adverse environmental factors have a direct influence on humans. Impacts can be disease transmission through exposure to pathogenic organisms, or by exposure to toxins having a physiological effect on humans. Lesser environmental factors such as living conditions in a home can effect the overall well-being of the

persons subjected to the given environment. As a member of the public health team, environmental health advocates and promotes disease prevention. Goals are met through the enforcement of regulations and programs developed to not only protect public health, but to also control adverse environmental factors.

Programs and regulations are grouped into the categories of: Water, Shelter, Food, Waste and Community Health. The following statistics falling under these categories reflect the services provided in fiscal year 1999-2000.

Food Service Program

To meet the public's expectations of safe and wholesome foods being served in any given establishment, regular inspections are conducted in all food service establishments in Tuscola County. Efforts in this program are key elements in assuring the meals we consume outside of the home are safe.

Fixed Food Service Establishments	160
Fixed Food Service Inspections	378
Mobile Food Inspections	3
Vending Inspections	9
Temporary Food Inspections	13
Foodborne Illness Investigations	10



Environmental Health Division

Surface and Groundwater Control

Basic to human life and public health philosophy, is the provision that a safe and adequate water supply is available to the individual and public. To this end, all wells in Tuscola County are installed under permit with well location being reviewed, proper isolations required, final inspections conducted and water sampling performed to determine water quality.

Well Permits Issued	487
Final Inspections	364
Complaints Investigated	4
Operation/Maintenance Evaluations	88



Wastewater Management

Contact with raw or improperly treated sewage is the major method by which diseases are spread. Therefore, the proper disposal and treatment of sewage is a critical aspect of protecting public health. Under state and local code enforcement the Environmental Health Division

performs permitting requirements, site evaluations, and installation inspections of all on-site sewage systems within Tuscola County.

On-Site Sewage Disposal Permits	408
On-Site Sewage Disposal Final Inspections	510
On-Site Sewage Permits—Commercial	4
On-Site Sewage Final Inspections—Commercial	4

Environmental Quality

Lesser activities important to health protection cover a myriad of programs such as: Shelter, Public Swimming Pools, Mobile Home Parks, Hazardous Waste, Solid Waste, Indoor and Outdoor Air, and Campgrounds.

Campground Inspection	5
Mobile Home Park Inspections	14
Public Swimming Pool Inspections	8
Indoor/Outdoor Air	11

Adult/Child Care Facilities	33
Solid Waste	40
Hazardous Waste	6
Animal Control	11
Residential Dwellings	11